

**GEEK
& CO.
CRAFTS!**

INSTRUCTION MANUAL

MONSTER

SEWING WORKSHOP



THAMES & KOSMOS



Franch-Kosmos Verlags-GmbH & Co. KG, Pfizerstr. 5-7, 70184 Stuttgart, Germany | +49 (0) 711 2191-0 | www.kosmos.de
Thames & Kosmos, 301 Friendship St., Providence, RI, 02903, USA | 1-800-587-2872 | www.thamesandkosmos.com
Thames & Kosmos UK Ltd, Goudhurst, Kent, TN17 2QZ, United Kingdom | 01580 212000 | www.thamesandkosmos.co.uk

KIT CONTENTS



-
- | | | | |
|---|----------------------------|----|---------------------------------|
| 1 | Colorful fabric pieces (6) | 6 | Red hair tie |
| 2 | Dark blue felt | 7 | Red and black embroidery thread |
| 3 | Red and white felt | 8 | Wooden stick |
| 4 | Thread | 9 | Small clothespin |
| 5 | Needle | 10 | Cotton batting |

YOU WILL ALSO NEED: Colored pencils or crayons, soft lead pencil, paper, ruler, scissors, pins, fabric scraps, various materials such as buttons, beads, woolen scraps, bows, or silk flowers

Dear Monster Friend,

With this kit, you will be able to sew lots of delightfully gruesome monsters for yourself and your friends. And the best part? Only you can decide exactly what your monsters will look like. This manual will show you how to turn your ideas into reality. So what are you waiting for? Grab your colored pencils and let's go!



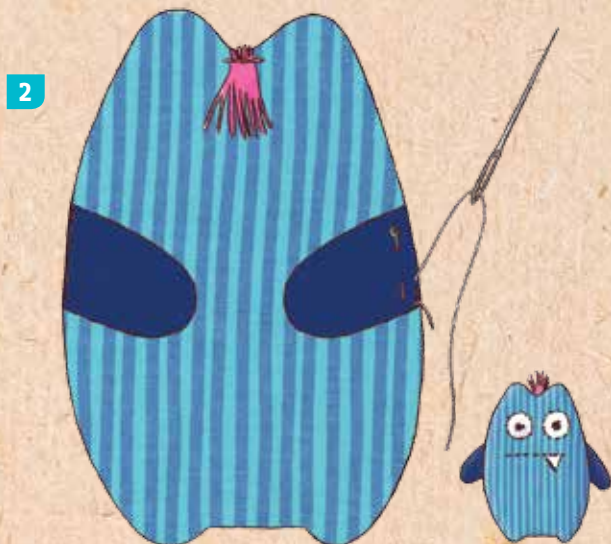
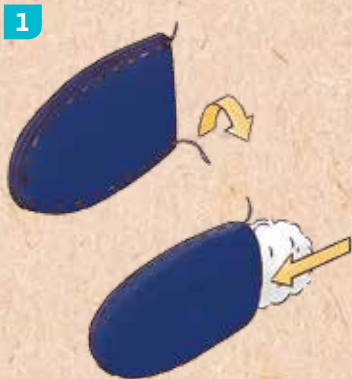
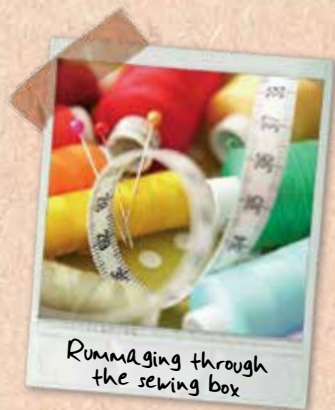
Arms, wings, fins... and hair

You will need:

Needle, thread, embroidery thread, felt, cotton batting, wooden stick, scissors, pins, woolen scraps

Here's how:

- 1 You can simply cut arms, wings, or fins for your monster out of felt. Or you can also cut the shape twice (double the felt over), sew the pieces together, turn it inside out and fill it with cotton batting. Suggest fingers or toes with a few stitches.
- 2 Sew on these extra body parts before the monster halves are sewn together. Lay the fabric for the back side of the monster flat in front of you and use pins to secure in place the part that you want to sew on. Then use small running stitches (see page 7) to sew the part on tight. Create hair by the same method, simply sewing on a few pieces of embroidery thread or wool.



Special decorations

You can accentuate certain body parts by sewing on a second type of fabric, for example for the face (with the eyes and mouth sewn on afterwards, of course) or the belly. This is known as appliqué. You can also add loving little details such as hearts, pockets, backpacks, and more.

You will need:

Needle, thread, embroidery thread, felt, colored fabric pieces, scissors, various materials such as bows and silk flowers

Here's how:

1 Start by cutting the desired shape out of a different-colored piece of fabric or felt, and then sew it on. For smaller shapes, a simple running stitch will do (see page 7). You can create an extra eye-catching detail by using a different-colored type of thread, especially if you're sewing on a solid-colored piece of felt.

Larger shapes such as faces are better sewn on with a backstitch (see page 7) or zigzag stitch (see page 8).

2 Little adornments and ornaments can also give your monster some special character. Try sewing on a heart, bow, or flower. Look around the house to see what you can find.

You will quickly find out that sewing monsters is easy and a lot of fun. You will definitely get more ideas as you go. Give them a try and soon you'll have a completely unique monster of your own creation.

1



2



Monster decorations