

 Rabbit's
Hat

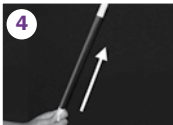
Ages 6+

TEN-TRICK MAGIC WAND



Scan this QR code and
enter the password **WANDZ**
for online video instructions!

1. THE RISING WAND



The two ends of the magic wand are loose and connected with a rubber band. Pull the lower end of the rod out of the rod by the rubber band (1). Clamp the end between your index and middle fingers (2). Slide your hand along the rod until you are holding it roughly in the middle (3), with the rubber band hidden.

As soon as you loosen your grip on the wand, it will slowly move upward. To your audience, it looks as if the wand is moving on its own! Slide the wand down and repeat the trick.



2. THE WIGGLY RUBBER WAND

1



2



Thanks to the power of your thoughts, the magic wand suddenly becomes soft and flexible in your hand. To do this, hold the wand loosely in the middle, between the tips of your thumb and index finger (1). Then quickly move your hand up and down, keeping the wand as loose as possible. The wand will wiggle rapidly. This gives your audience the illusion that the wand has become soft and flexible (2).

3. THE FLOATING WAND



Grasp the magic wand in your left hand (1). With your right hand, grip your left wrist, placing the right hand index finger secretly on the wand in the left hand (2). Tell your audience that in order to do this trick, you need a very steady hand, and for this reason you are holding your wrist with your right hand. Tell them also that you are going to magnetize your hand, and at the same time secretly press your left index finger against the wand (3). The wand is now supported and when you straighten out the fingers of your left hand, the wand will stay in its position (4). Move your hands up and down to make the illusion even more effective.

4. THE AMAZING MAGIC WAND



The magic wand floats in front of the magician's fingertips. You will need about 30 inches of thin black thread in addition to the wand. Make a loop with the thread by tying its ends in a knot (1). Hang the knotted end around one of the top buttons of your shirt and let the loop hang down (2). When you are ready to perform the trick, secretly slide one end of the wand through the loop. Hold the wand horizontally in both palms and move your hands forward, tightening the thread. Say the magic words ("Hocus Pocus"), open your hands, and push the magic wand forward without supporting it from below (3). To your audience, it will look like the wand is floating in front of your hands! Tip: The trick works best if you wear a black or colorful patterned shirt, to hide the thread.

5. THE GHOST WAND

1



2



3



4



5



When the magician lays the magic wand between two candlesticks and says some magic words, the wand taps on the table! Insert two paper clips at the bases of both candles, as shown in the pictures. Secure a length of clear nylon thread to one candlestick (2) and lead the thread through the paperclips in the other candlestick (3) and off to the side. When you lay the wand on the thread between the candlesticks, your assistant tugs the thread, and the wand taps the tabletop.

6. THE WAND TELLS THE TIME



Tell your audience that the magic wand has real magic powers and that you are going to prove it. Ask an audience member to think of an hour on the clock. Take the wand and tap the participant's head with it. Place a clock face close by and tell the audience, "Now every time I tap my wand, you (the participant) are going to silently add one to the number you are thinking of, but when you get to twenty, you will tell me to stop." (1) You will silently count each tap (2), and when you get to eight, point the wand at 12. Then count backwards on the clock with each tap of the wand until the participant tells you to stop: the wand will be pointing to the hour that the participant was thinking of (3)!

7. THE TWISTED WAND



1



2



3



4



5



6



7



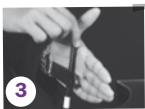
8



Beforehand, make an imitation magic wand with black and white paper (1-3). In front of the audience, roll this fake wand in a piece of newspaper, completely covering it (4 and 5). Now crush the newspaper roll (6 and 7). The audience will think you crushed the wand inside the newspaper. Quickly take the real wand out of your pocket (8) while at the same time disposing of the crumpled newspaper containing the fake wand so that the audience cannot inspect it.

8. THE WAND FLOATS AGAIN

Before the show, slide a small ruler under your watchband and up the inner side of your left arm, hiding it up your shirtsleeve (2). Stretch your left arm. Take the magic wand in your left hand, pull the ruler out a little with your right hand and wedge the wand between the ruler and your left hand (3). Now when you extend your fingers and you let your arm down, it looks like the wand is floating behind the palm of your hand (4). Afterward, you must slide the ruler secretly up your sleeve again so nobody sees it.



9. THE WAND IN THE BOTTLE



Beforehand, take a piece of black thread and trap it under one of the removable ends of your wand (1-5). Tie the other end of the thread onto one of the lower buttons of your shirt (6). You will have to rehearse this to find the correct length, and it helps if you wear dark clothing. Drop the wand (thread end down) into a bottle (7). By moving the bottle away from your body (or vice versa), the wand will rise up (8). You can also press down on the thread between the bottle and your body while making a magical gesture and the wand will rise up or jump out. Afterward, pull the wand apart and hand out all the parts for examination – the thread will have fallen away.



1



4



5



7



8

10. THE SPOOKY ROLLING WAND

Your audience must be seated a certain distance from the table. In front of you on the table lies a magic wand. When you make some magical gestures, the magic wand starts to move on its own!

When you make the magical gestures with your hands, you distract your audience's attention from your mouth. This allows you to secretly blow a stream of air onto the magic wand to make it roll. You must perform this trick on a table without a tablecloth so that the magic wand can easily roll along the table.



© 2020 THAMES & KOSMOS, LLC., 89 SHIP ST., PROVIDENCE, RI, 02903 USA
© FRANCKH-KOSMOS VERLAGS-GMBH & CO. KG, PFIZERSTR. 5-7, 70184 STUTTGART,
GERMANY +49 (0) 711 2191-0 www.kosmos.de
THAMES & KOSMOS UK LP, CRANBROOK, KENT, TN17 3HE, UK
® THAMES & KOSMOS IS A REGISTERED TRADEMARK OF THAMES & KOSMOS, LLC.
PROTECTED BY LAW. ALL RIGHTS RESERVED.
RIGHT TO TECHNICAL ALTERATIONS RESERVED.
CUSTOMER SERVICE NORTH AMERICA: 1-800-587-2872 www.thamesandkosmos.com
CUSTOMER SERVICE UK: 01580 713000 www.thamesandkosmos.co.uk
ALL MAGIC TRICKS, PARTS, DESIGNS, AND ORIGINAL DESCRIPTIONS OF TRICKS ARE THE
WORLDWIDE COPYRIGHT OF WORLD MAGIC INTERNATIONAL (WMI) A.V.V. © 1978, 1998,
2020 OWNER OF THE HANKY PANKY TRADEMARKS AND COPYRIGHTS. MADE BY HANKY
PANKY TOYS (THAILAND) CO., LTD. HANKY PANKY®

Warning! Not suitable for children under
3 years. Choking hazard – small parts
may be swallowed or inhaled. Keep
the packaging and instructions as they
contain important information.



Rabbit's Hat Ten-Trick Magic Wands
No. 680286 KIN 1618268
Made in Thailand



680286-02-120220
Master_1618268