

© 2018 Thames & Kosmos, LLC., 301 Friendship St., Providence, RI, 02903 USA  
Manufacturer: © Franckh-Kosmos Verlags-GmbH & Co. KG, Pflizerstr. 5-7, 70184 Stuttgart, Germany  
+49 (0) 711 2191-0; [www.kosmos.de](http://www.kosmos.de) ® Thames & Kosmos is a registered trademark of Thames  
& Kosmos, LLC. Protected by law. All rights reserved. Right to technical alterations reserved.  
Customer Service: 1-800-587-2872; [www.thamesandkosmos.com](http://www.thamesandkosmos.com)

 **THAMES & KOSMOS**

**Ooze  
Labs**



# Mix Your Own Glowing Galaxy Slime

Make  
slime that  
twinkles  
and glows  
like the  
starry  
night sky!

**WARNING** — THIS  
SET CONTAINS CHEMICALS  
THAT MAY BE HARMFUL IF  
MISUSED. READ CAUTIONS  
ON INDIVIDUAL CONTAINERS  
AND IN MANUAL CAREFULLY.  
NOT TO BE USED BY  
CHILDREN EXCEPT UNDER  
ADULT SUPERVISION.

**WARNING.** Not  
suitable for  
children under 3  
years. Choking  
hazard — small  
parts may be  
swallowed or inhaled. Keep  
the packaging and instructions  
as they contain important  
information.



Ooze Labs: Galaxy Slime  
No. 575009 KIN 1618079  
Made in Taiwan

575009-02-201118

## INFORMATION FOR PARENTS AND ADULTS

Dear Parents,

With this kit, you will be helping your child experiment with glowing galaxy slime. Please read these instructions together with your child, follow them and keep them for reference. Only carry out the experiments listed in the instructions. Do not allow the slime powder and the finished slime to come into contact with the eyes or mouth. Please remind your child to wash his or her hands thoroughly after the experiments and after handling the slime. This set is for use only by children over 7 years. For use under adult supervision. Therefore store it out of reach of children under 7 years old and animals. This includes the slime powder, the finished slime, and the materials in the set.

Look for a good place to do the experiments. The area surrounding the experiment should be kept clear of any obstructions and away from the storage of food. Use a solid table with a top that can easily be cleaned. The working area should be cleaned up immediately after carrying out the activity. Also clean all equipment (e.g., the spatula) after use and thoroughly wash your hands. The slime powder should be used up (completely) during the course of the experiment. Open the packets of slime powder and glitter with scissors — never with your teeth. While experimenting, please be careful not to create dust of the powder. Do not eat or drink in the experimental area and while doing the experiments. The slime may cause stains that can't be washed out of clothing. Therefore wear suitable clothes that can get stained and keep the materials away from table clothes, curtains, and carpets. Store the finished slime in the test tube to prevent it from drying out and to prevent it from sticking on the surface. Dispose off all materials in this kit in the household trash, as well as the slime when it gets dirty, liquefies, or dries out.

We hope you and your child have a lot of fun with the glowing galaxy slime!

## 1. SETTING UP THE OOZE TUBE

### CONTENTS

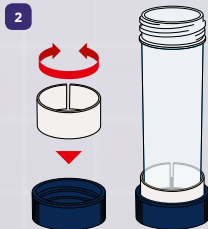
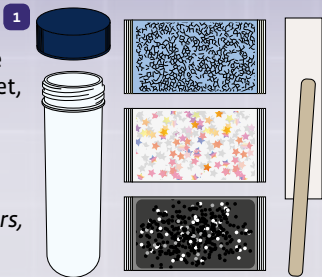
Test tube, lid, glowing blue slime powder packet, star glitter packet, black glitter packet, wooden spatula, cardboard strip

### YOU WILL ALSO NEED

*Permanent marker, water, scissors, paper towel*

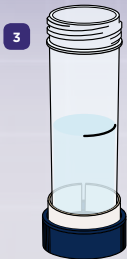
### HERE'S HOW

1. Remove the contents from the test tube.
2. Use the cardboard strip to make a test tube holder by rolling it into a circular tube and fitting it into the cap. Place the test tube into the holder.



## 2. MIXING THE SLIME

3. Fill the test tube with 75 ml of water. To measure this, use the test tube guide printed here to make a mark on the test tube. Fill the test tube up to the line with water. (You can also just eyeball it.)



4. Open the packet of slime powder using a pair of scissors. Do not use your teeth.



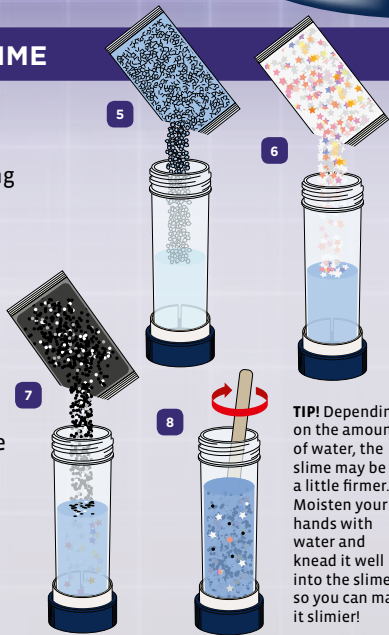
**CAUTION!** Be careful not to get the powder in your mouth or eyes!

9 cm  
(75 ml)

TEST TUBE FILLING GUIDE

### 3. MIXING THE SLIME

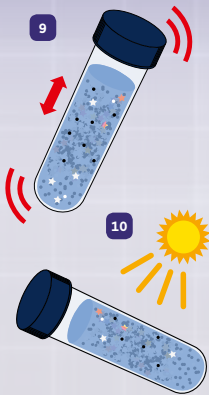
5. Pour all of the powder slowly into the test tube and avoid creating airborne dust.
6. Use the scissors to open the star glitter packet. Pour it into the tube.
7. Use the scissors to open the black glitter packet. Pour it into the tube.
8. Use the wooden spatula to mix everything into the water.



**TIP!** Depending on the amount of water, the slime may be a little firmer. Moisten your hands with water and knead it well into the slime so you can make it slimier!

## 4. MAKE IT TWINKLE AND GLOW

9. After everything is mixed into the water, close the test tube with the lid and shake it for 30 seconds. Let the contents sit, shaking the tube every few minutes, until they have solidified. This takes about 15–20 minutes. After the contents have solidified, you can open up the test tube and have fun experimenting with the slime.
10. Hold the test tube with the slime under a lamp or in sunlight and move it back and forth. You will see a sparkling play of colors. The small pieces of glitter in the slime reflect the light shining on their surfaces.
11. Now place the slime under a light source, like a light bulb, for a few minutes. Then bring the slime into a dark room. What happens?

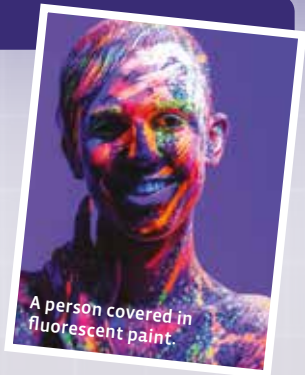


**Disposal:** Your glitter slime liquefies and disintegrates after 4 days. Dispose of it in a paper towel in the trash!

## WHAT'S HAPPENING?

The shine of the glitter is created when the small surfaces of the star glitter pieces reflect the light in different directions. The light changes color with the movement of the observer or the object. If the color of the reflected light changes, this is called **iridescence**.

As for the glowing effect, a solid substance that lights up when exposed to energy, like light or electricity, is called a **phosphor**. A phosphor can be **phosphorescent**, which stays glowing after the energy source is removed, or **fluorescent**, which only glows while the energy is present and for a brief moment after. The reason that a phosphorescent material glows after the light source has been removed is because the molecules in the material store the incoming light energy and then gradually emit it in the form of light.



A person covered in fluorescent paint.

# SAFETY INFORMATION

## WARNING!

Not suitable for children under 3 years. Choking hazard — small parts may be swallowed or inhaled. Keep packaging and instructions, as they contain important information.

### Instructions for handling the chemicals

**Glowing blue slime powder, 6.5-7.5 g (0.22-0.26 oz.), Item No. 721855.** Ingredients: Guar gum, locust bean gum, silica, sodium phosphate, sodium benzoate, zinc sulfide (glow-in-the-dark pigment), color pigment

**Star glitter, 1-1.1 g (0.03-0.04 oz.)**

**Black glitter, 1-1.1 g (0.03-0.04 oz.)**

Do not ingest. Avoid breathing dust. Only perform experiments that are described in this instruction manual. Do not get in eyes, into the mouth or on clothing. Wash hands thoroughly after handling.

In case of eye contact: Wash out eye with plenty of water, holding eye open if necessary. If swallowed: Wash out mouth with water, drink some fresh water. Do not induce vomiting. In case of doubt, seek medical advice without delay. Take the slime or powder and its packet / this manual with you. Store locked up. Keep out of reach of small children and animals.

Use the materials carefully, as they may stick to or stain fabric, wood, carpet, or other materials. Clean with water. Dispose of the empty bag and other remainders in the trash. As we have omitted hazardous substances from this slime, it will disintegrate after a few days; the mixture becomes watery. Please dispose of it in the household trash using paper towels.

1ST EDITION 2019

© 2019 THAMES & KOSMOS, LLC, 301 FRIENDSHIP ST., PROVIDENCE, RI, 02903, USA

1-800-587-2872 WWW.THAMESANDKOSMOS.COM

© 2019 FRANKF. KOSMOS VERLAGS-GMBH & CO. KG, PFIZERSTR. 5-7, 70184 STUTTGART, GERMANY

+49 (0) 711 2191-0 WWW.KOSMOS.DE

® THAMES & KOSMOS IS A REGISTERED TRADEMARK OF THAMES & KOSMOS, LLC.

PROTECTED BY LAW. ALL RIGHTS RESERVED. WE RESERVE THE RIGHT TO MAKE TECHNICAL CHANGES.

PRINTED IN TAIWAN

THIS WORK, INCLUDING ALL ITS PARTS, IS COPYRIGHT PROTECTED. ANY USE OUTSIDE THE SPECIFIC LIMITS OF THE COPYRIGHT LAW WITHOUT THE CONSENT OF THE PUBLISHER IS PROHIBITED AND PUNISHABLE BY LAW. THIS APPLIES SPECIFICALLY TO REPRODUCTIONS, TRANSLATIONS, MICROFILMING, AND STORAGE AND PROCESSING IN ELECTRONIC SYSTEMS AND NETWORKS. WE DO NOT GUARANTEE THAT ALL MATERIAL IN THIS WORK IS FREE FROM COPYRIGHT OR OTHER PROTECTION.

ILLUSTRATIONS/PHOTOS: THAMES & KOSMOS, LLC; PERSON IN GLOWING PAINT: © IOSIF YURLOV - STOCK.ADOBE.COM