



Invisible Tripwire Alarm

With this high-tech surveillance system, you can secure the entrance to your room from intruders or protect a valuable item. If an intruder enters your room or a thief tries to steal your property and passes through the light barrier, the loud alarm signal is sure to scare them away!

WARNING! Not suitable for children under 3 years. Choking hazard — small parts may be swallowed or inhaled.
Keep the packaging and instructions as they contain important information.

Safety warning: This surveillance system works with red LED light. It does not produce real laser beams.
Do not look directly into the light beam, it could blind you!

How your security system works:

The tripwire projects an invisible beam of light between the transmitter and receiver. If someone breaks through this beam of light, the alarm sounds and they are caught. The surveillance system consists of three parts: the base station with two receivers and two small devices, the transmitters. The receivers of the base station receive light beams from both transmitters.

How to put the surveillance system into operation:

- Have an adult insert the batteries into each of the three devices (figure 2 + 3).
- Set the switch on the bottom of the base station to the “sun” symbol if your surveillance system is in a bright room and to the “moon” symbol if it is being used in a dark room (figure 3).
- Press the red main switch on top of the base station and the two LED indicator lights next to it will light up (figure 1).
- Now set the on/off switch on the bottom of both transmitters to “ON” (figure 2).

- Place the three devices so that each transmitter is directed at a receiver on the base station. The light tubes of the transmitters and the receivers on the base station are movable (figure 1).
- When the light beam hits the receiver, the corresponding LED indicator will turn off briefly. Three seconds later, a short beep will sound. The LED indicators will flash to indicate that the surveillance system is armed. If you are having trouble finding the light beam, use a white sheet of paper to locate it.
- If the light beam is broken, the alarm sounds immediately and lasts for about six seconds. You can also turn it off yourself by pressing the button on the base station. If you press the button again, the light barrier will be armed once more.

TIPS!

- Place the three devices far away from white walls, windows, or bright lights.
- The base station should never be turned toward a window.

Quick Start:

1. Have an adult insert the batteries (see back).
2. Set day or night mode on the base station and press the red main switch.
3. Activate transmitter.
4. Set up devices and adjust them so that the light from the transmitter hits the receiver.
5. As soon as you hear a signal from the receiver, the connection is established. The area is secure!

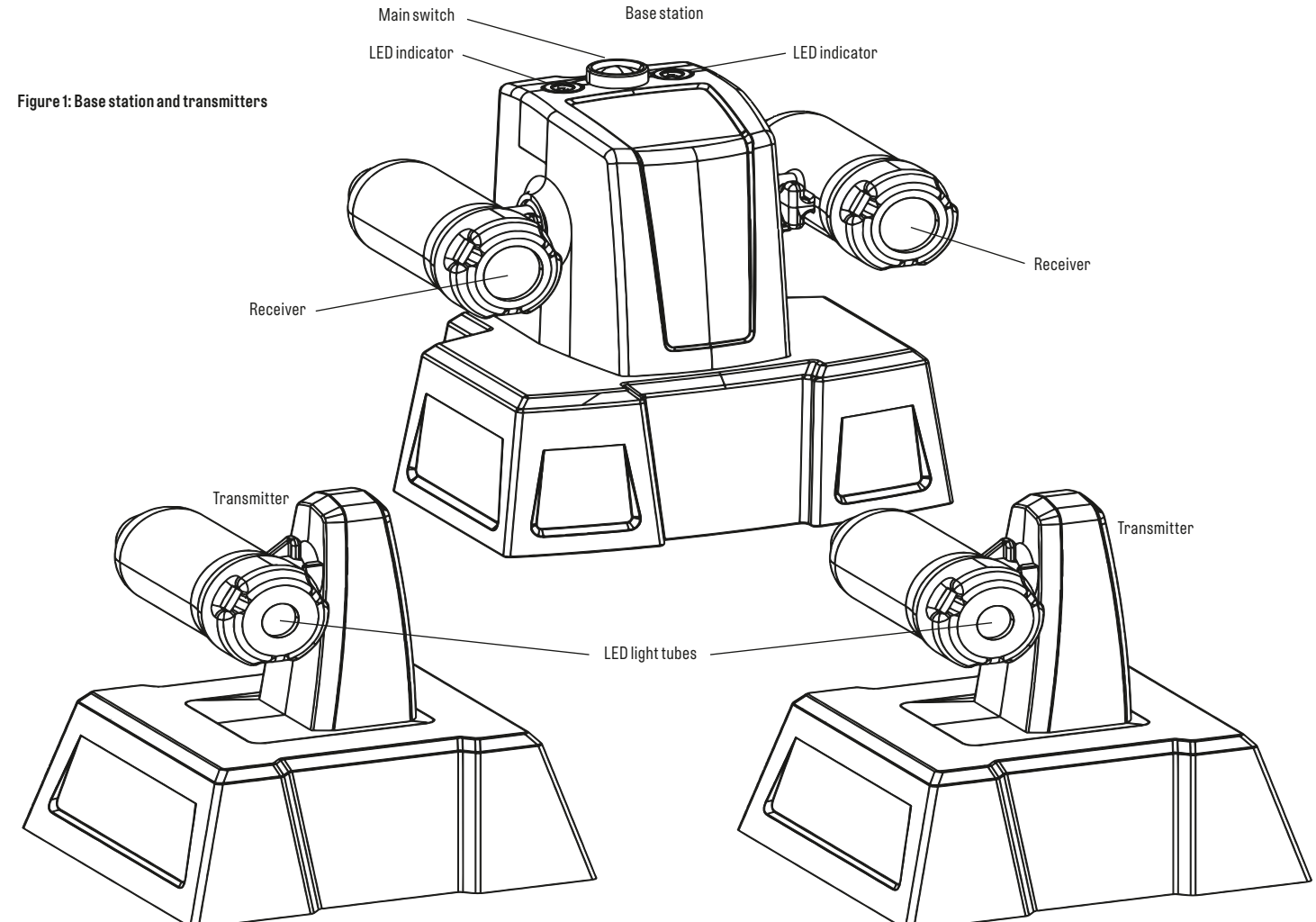


Figure 1: Base station and transmitters

How to troubleshoot:

- If the base station turns on even though the transmitters are not turned on, the environment may be too bright. Try changing the switch from “moon” to “sun” or darkening the room.
- Very bright light (e.g., direct sunlight) can trigger a false alarm. The tripwire therefore works best in darkened rooms, and not in bright daylight.
- If the devices do not recognize each other, check again whether the sensors of both transmitter stations are in line with the receiver of the base station. The alarm system works best when the transmitter and receiver are no more than 1-2 meters (3-7 feet) apart.

How to make the light rays visible:

Fill a misting water bottle with some tap water. If you want to see the light rays when the system is on, simply spray some water onto the beam, or where it should be, and look at it from an angle while spraying. This way you can see the light beam refracting in the small water droplets.

How to insert or replace the batteries of the base station and sensors:

Please have an adult do this!

Loosen the screw using a small screwdriver and lift the battery compartment cover. The screw will remain in the cover. Remove the old batteries and insert two new ones. Make sure the polarity is correct (figures 2 + 3). Close the battery compartment and screw the cover back on.

Figure 2: Transmitter - Changing Batteries

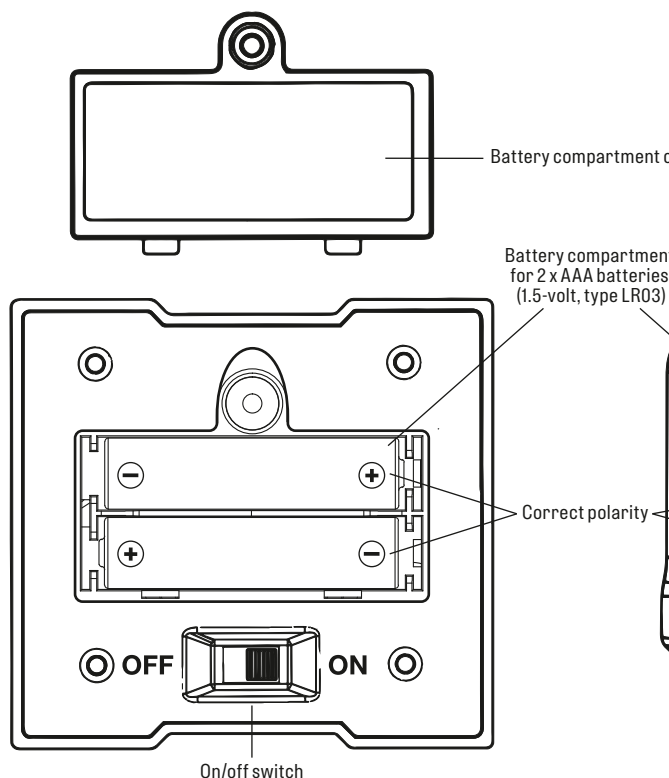
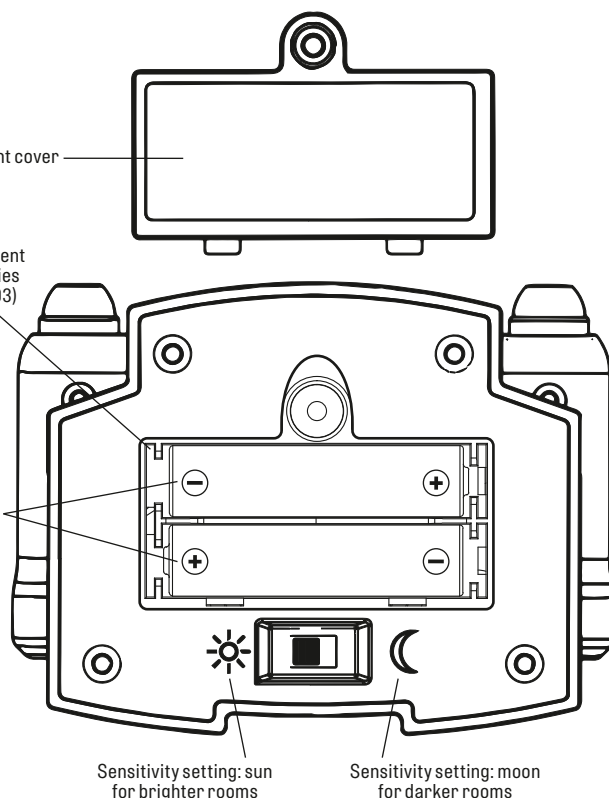


Figure 3: Base Station - Changing Batteries and Setting Sensitivity Mode



Safety and disposal instructions for the device and batteries:

- An adult should insert and change the batteries.
- To operate the device, you will need six AAA batteries (1.5-volt, type LR03), which could not be included in the kit due to their limited shelf life.
- The batteries must be inserted with the correct polarity (+ and -) and pressed into the battery compartment with light pressure (see figure 2 + 3). Always close the battery compartment with the cover after replacing the batteries. When changing the batteries, remove all batteries from the battery compartment. Then insert new batteries.

- Avoid a short circuit of the batteries. A short circuit can cause the wires to overheat and the batteries to explode.
- Different types of batteries or new and used batteries are not to be mixed.
- Do not mix old and new batteries.
- Do not mix alkaline, standard (carbon-zinc), or rechargeable (nickel-cadmium) batteries.
- The supply terminals are not to be short-circuited.
- Non-rechargeable batteries are not to be recharged. They could explode!
- Rechargeable batteries are only to be charged under adult supervision.

- Rechargeable batteries are to be removed from the toy before being charged.
- Exhausted batteries are to be removed from the toy.
- The supply terminals are not to be short-circuited.
- Avoid deforming the batteries.
- Dispose of used batteries in accordance with environmental provisions, not in the household trash.
- **IMPORTANT!** Protect the device from moisture. Clean it with a damp cloth and allow it to dry thoroughly before using it again.

NOTES ON DISPOSAL OF ELECTRICAL AND ELECTRONIC COMPONENTS

The electronic components of this product are recyclable. For the sake of the environment, do not throw them into the household trash at the end of their lifespan. They must be delivered to a collection location for electronic waste, as indicated by the following symbol:

Please contact your local authorities for the appropriate disposal location.



© 2015 Franckh-Kosmos Verlags-GmbH & Co. KG, Pfizerstrasse 5-7, D-70184 Stuttgart, Germany

This work, including all its parts, is copyright protected. Any use outside the specific limits of the copyright law without the consent of the publisher is prohibited and punishable by law. This applies specifically to reproductions, translations, microfilming, and storage and processing in electronic systems and networks. We do not guarantee that all material in this work is free from copyright or other protection.

Production and design: komuniki - Michael Schlegel (Würzburg)
Cover illustration: Wolfgang Peschke (Ostfildern)
Product illustration: AR GFX - Andreas Resch (Ulrich am Waasen)

© 2024 Thames & Kosmos, LLC, Providence, RI, USA
Thames & Kosmos® is a registered trademark of Thames & Kosmos, LLC.

Editing: Ted McGuire, Hannah Mintz, and Ava Tessitore
Additional illustrations: Dan Freitas and Ted McGuire
Packaging artwork: Dan Freitas

Distributed in North America by Thames & Kosmos, LLC.
Providence, RI 02903
Phone: 800-587-2872; Web: www.thamesandkosmos.com

Distributed in United Kingdom by Thames & Kosmos UK LP.
Cranbrook, Kent TN17 3HE
Phone: 01580 713000; Web: www.thamesandkosmos.co.uk

We reserve the right to make technical changes.

Printed in China / Imprimé en Chine