

# SEA CREATURES AQUARIUM

## NEXT LEVEL CHALLENGES!



NAME:

# 1 BRINE SHRIMP DIAGRAMS

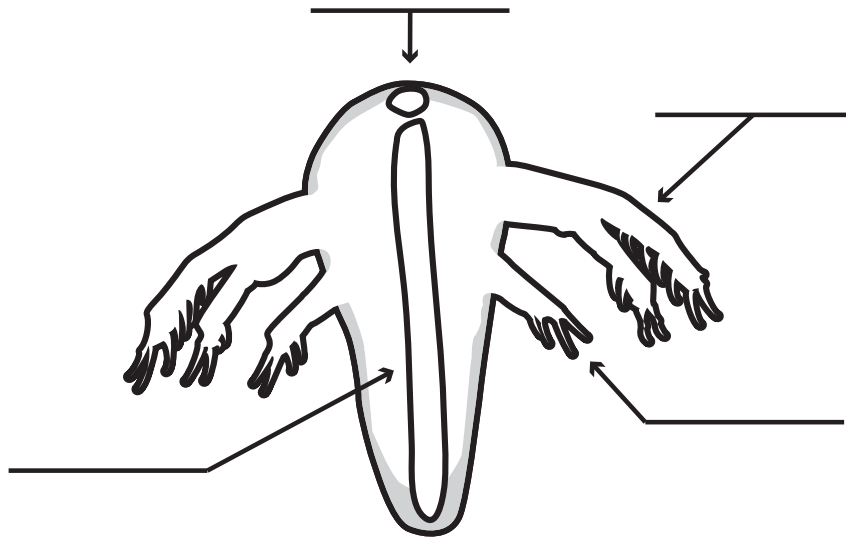
## You will need:

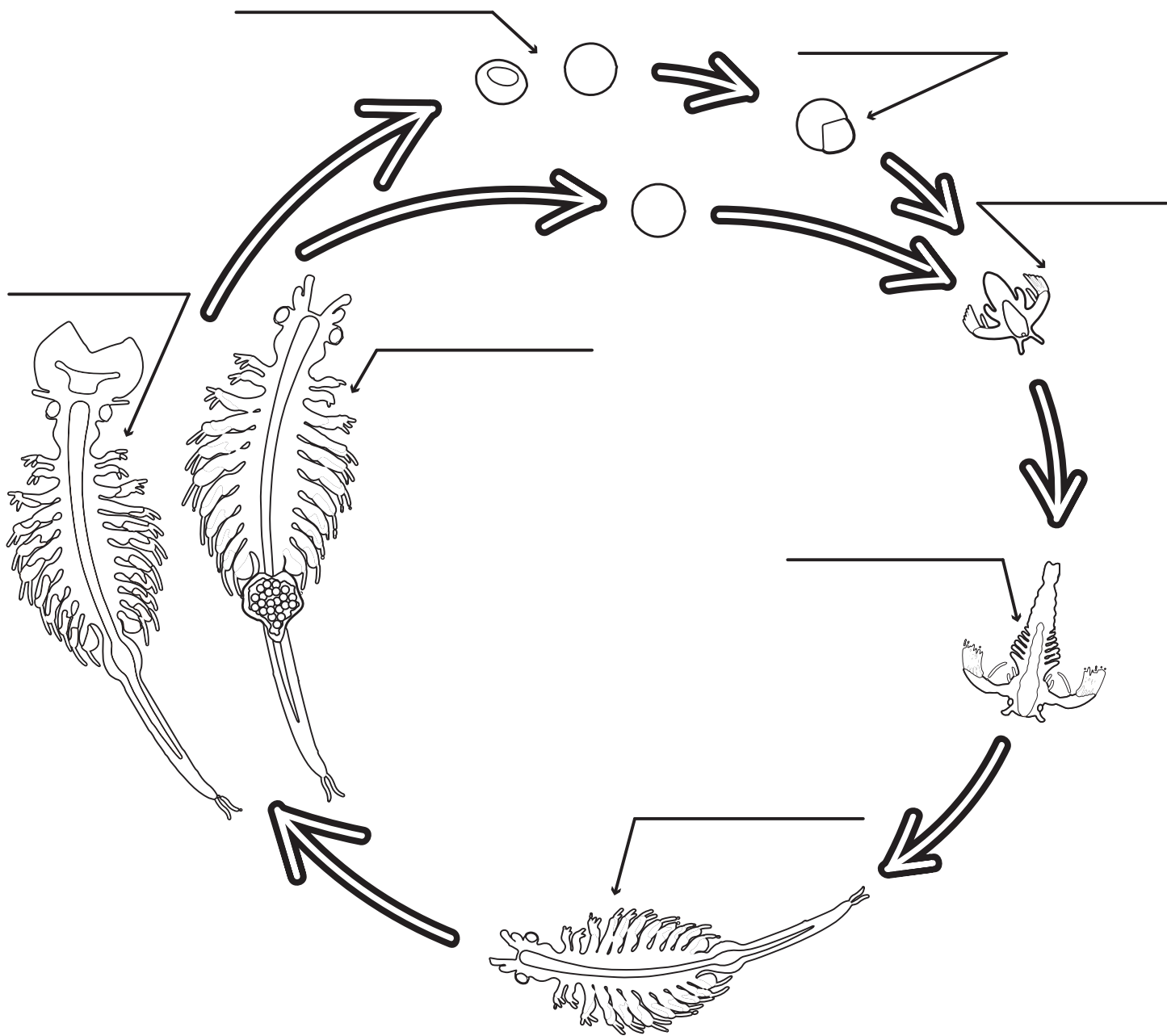
Sea Creatures Aquarium Manual

Markers or colored pencils

## Here's how:

Use page 7 of the manual to label the diagrams below and to the right. Then color in the brine shrimp. You can use their real-life colors or get creative!





## ② HERDING BRINE SHRIMP

### **You will need:**

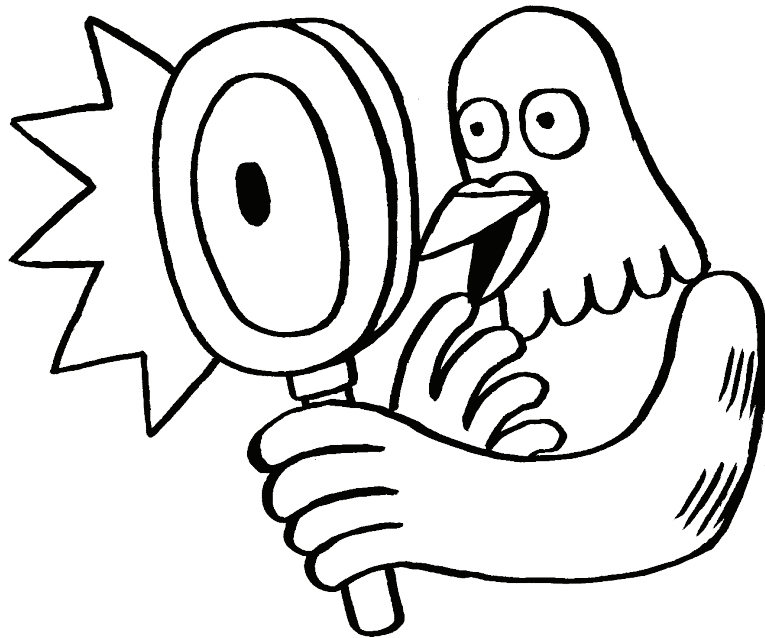
Tank with some adult brine shrimp

*Flashlight or phone light*

*Optional: LED lights in different colors*

### **Here's how:**

1. Place your brine shrimp tank somewhere where it is easy to observe closely
2. Turn on your flashlight and hold it up to the tank
3. Observe the brine shrimp behavior
4. Turn off the lights in the room and make the room as dark as possible
5. Shine the flashlight into the tank again
6. What do you notice?
7. If you have other colored lights, such as LED string lights, repeat the experiment again with those. Does anything change?



### ③ BRINE SHRIMP WORD SEARCH

P J E V A I N A U P L I U S E  
I M L O Q R M C H W C U L B X  
Z W I D Y I T C L Y U Y U T O  
P A N R X R T E S A L C S F S  
C O E E H A B T M A W E A L K  
O L V A H S S M R I M S L H E  
F K U D G A E V E A A K T W L  
J L J O F L A N K V J L Y B E  
S P H N F N A D I Z S I B D T  
G M V X N H P B S R P J P A O  
G K F E T K Y E C D B R T A N  
E Z T W V V L T N A M R O D F  
A N A E C A T S U R C Y V I F  
A P H O T O R E C E P T O R S  
P C S E K V C J F K O P V G W

ALGAE  
ANTENNA  
ARTEMIA  
BRINE SHRIMP  
CLAWS  
CRUSTACEAN  
CYSTS  
DORMANT  
EGGS

EMBRYO  
EXOSKELETON  
HATCH  
JUVENILE  
LARVA  
NAUPLIUS  
PHOTORECEPTORS  
SALTY

